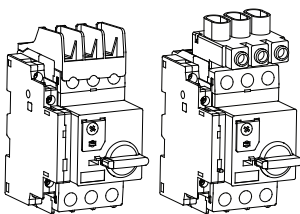
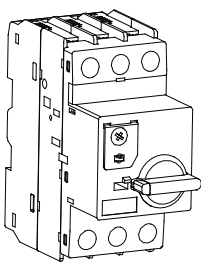


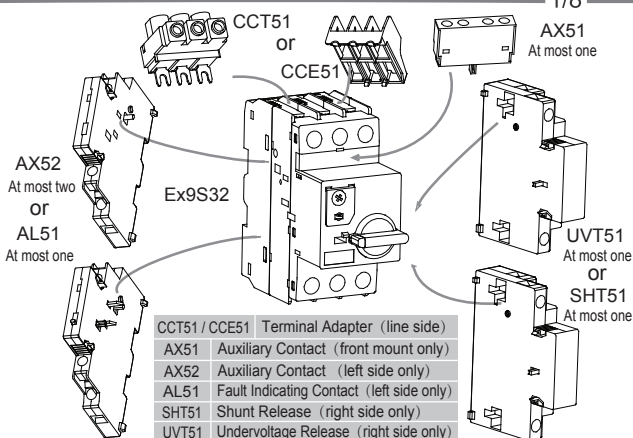
Ex9S32 Manual Motor Starter

Manual Self-Protected Combination Motor Controller



Z9S32201912NA

1/8



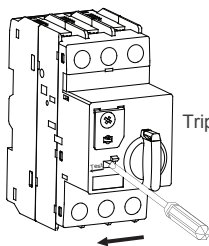
2/8

	Screw	Torque	Strip Length (a)
CCT51	M5	31 lb·in [3.5 N·m]	0.5 in [13 mm]
Ex9S32	M4	22 lb·in [2.5 N·m]	0.43 in [11 mm]
UVT51,SHT51	M3.5	15 lb·in [1.7 N·m]	0.4 in [10 mm]
AX51,AX52,AL51	M3	7 lb·in [0.8 N·m]	0.35 in [9 mm]

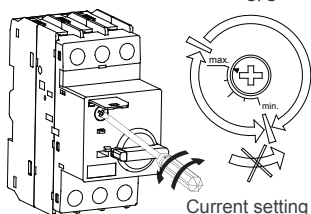
	Screw		Torque		Strip Length (a)	
CCT51	2.5~16mm ²	—	—	—	2.5~16mm ²	—
	14~6 AWG	—	—	—	14~6 AWG	—
Ex9S32	2.5~10mm ²	2.5~6mm ²	1~10mm ²	1~10mm ²	2.5~10mm ²	2.5~10mm ²
	14~8 AWG	14~10 AWG	18~8 AWG	18~8 AWG	14~8 AWG	14~8 AWG
AX51,AX52,AL51	1~2.5mm ²	1~2.5mm ²	1~2.5mm ²	1~2.5mm ²	1~2.5mm ²	1~2.5mm ²
UVT51,SHT51	18~12 AWG	18~12 AWG	18~12 AWG	18~12 AWG	18~12 AWG	18~12 AWG

3/8

Function Instruction

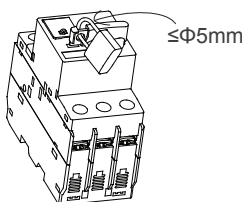


Trip test



Current setting

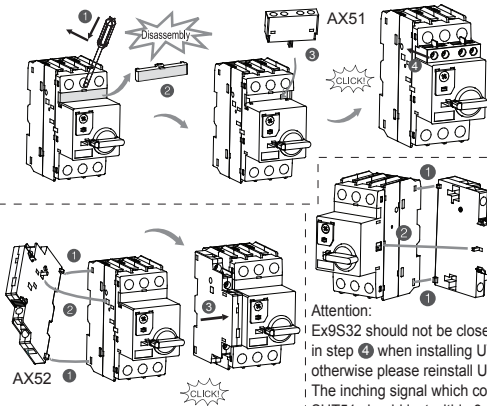
Attention:
Turn off power supplying before installation, removal or adjustment of the products and accessories.

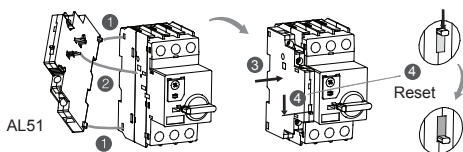


4/8

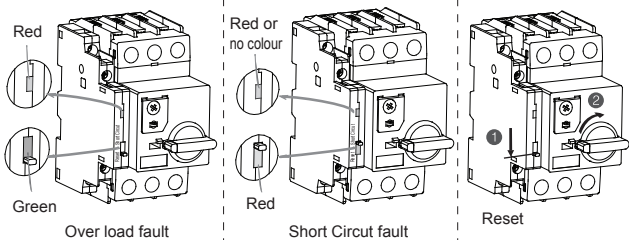
Mounting of Instruction

Attention:
Accessories can be installed when Ex9S32 in OFF position.

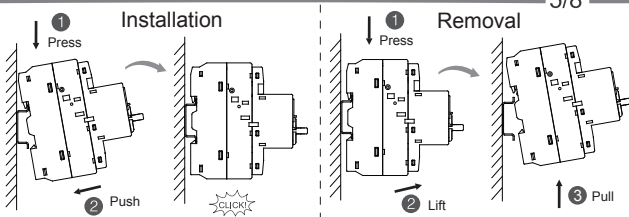




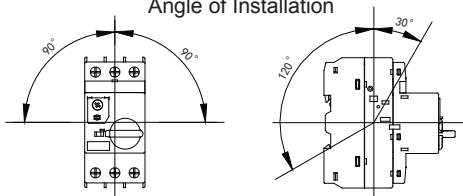
Fault Indication and Reset



5/8



Angle of Installation



6/8



WARNING

To maintain overcurrent, short-circuit, and ground-fault protection, the manufacturer's instructions for selection of overload and short-circuit protection must be followed to reduce the risk of fire or electric shock.



AVERTISSEMENT

Pour assurer une protection continue contre les surintensités, les courts-circuits et les fuites à la terre, les instructions du fabricant relatives à la sélection d'une protection contre la surcharge et les courts-circuits doivent être respectées afin de réduire le risque d'incendie et ou de choc électrique.

7/8



WARNING

When an overload or a fault current interruption occurs, circuits must be checked to determine the cause of the interruption. When a fault condition exists, the current-carrying components should be examined and replaced when damaged, and the integral current sensors must be replaced to reduce the risk of fire or electric shock.



AVERTISSEMENT

En cas d'intervention due à une surcharge ou un courant de défaut, les circuits doivent être vérifiés pour déterminer la cause de l'interruption. En condition de défaut, les composants porteurs de courant devraient être examinés et remplacés au besoin, et les capteurs de courant intégrés doivent être remplacés afin de réduire le risqué d'incendie et ou de choc électrique.

8/8

Device must be installed in an enclosure sized 460mm x 200mm x 140mm at a minimum.
Surrounding Air Temperature rating of 40°C.

NOARK



Printed with environment-friendly paper

Copyright Noark. All Rights Reserved

na.noark-electric.com

02/2020